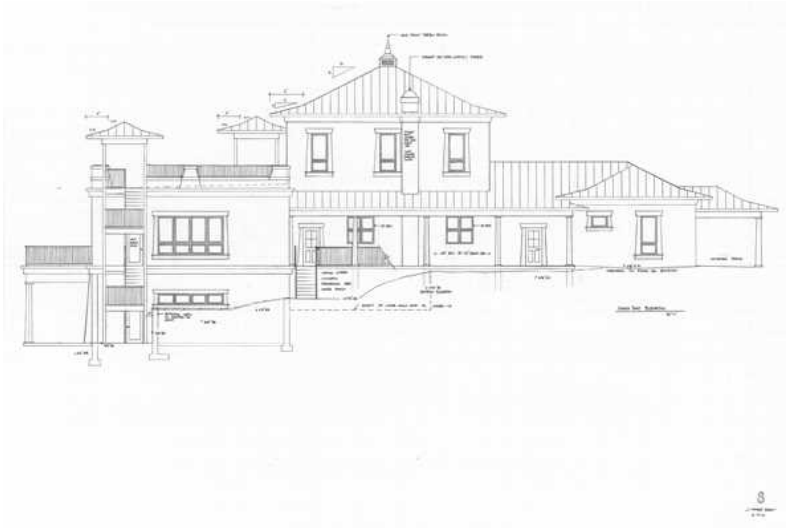




Update on Serenity Ridge Building Construction

New Facility Will Serve Ligmincha Community



You may recall reading in the [August issue of VOCL](#) about the Tibetan ritual groundbreaking ceremony for the planning of the new building at Serenity Ridge Retreat Center. Here we want to share with you an update and some recent photos.

The new building is now under construction in the area between the gompa (meditation hall) and the Lama House. The foundation has been dug and many rocks removed. (Envision a lovely rock garden near the building in the future!) As the walls go up, this new building will transform Serenity Ridge. With its welcoming space, dining room with expansive view of the hills beyond, new kitchen, rooftop meditation deck, and fully equipped recording studio to develop more online programming and recorded teachings, the facility will help support practitioners around the world with the loving, healing practices of the Bön tradition.

